



EJE 116n/120n

Electric pedestrian operated
pallet truck (1600/2000 kg)

- Powerful through maintenance-free 3-phase AC motor
- Extremely manoeuvrable due to compact design
- Easy operation with the tiller in the upright position by using the crawl speed button
- Excellent stability on cornering with Pro-Trac Link
- Multi-shift operation with sideways battery exit (optional)

EJE 116n/120n

The EJE Series 1 pallet trucks are particularly economical helpers. For lorry loading and off-loading as well as for horizontal transport over short distances. The main advantage: they are the ideal truck to take on a lorry through their very short chassis dimension (L₂) of only 494 mm (short version).

The powerful drive motor in 3-phase AC technology is another advantage. Its optimum efficiency factor ensures high speed and powerful acceleration in every situation - the ideal precondition for fast, efficient goods throughput. Added to the speed of operation is the long operating time: batteries up to 250Ah in combination with excellent energy management guarantee long operating times - even for intensive utilisation.

The operator has everything under control at any time with the bottom mounted long tiller. It ensures the essential distance between operator and truck. Particularly on corners, the EJE 116n/120n never gets "too close" to the operator. And if space is at a premium, the crawl speed button facilitates safe travel with the tiller in the upright position. One touch of a button is sufficient: the brake is released and the drive switch controls travel at a much reduced speed. The low overall height primarily pays off in a confined space. It provides even the shorter operator with optimum visibility towards the fork tips.

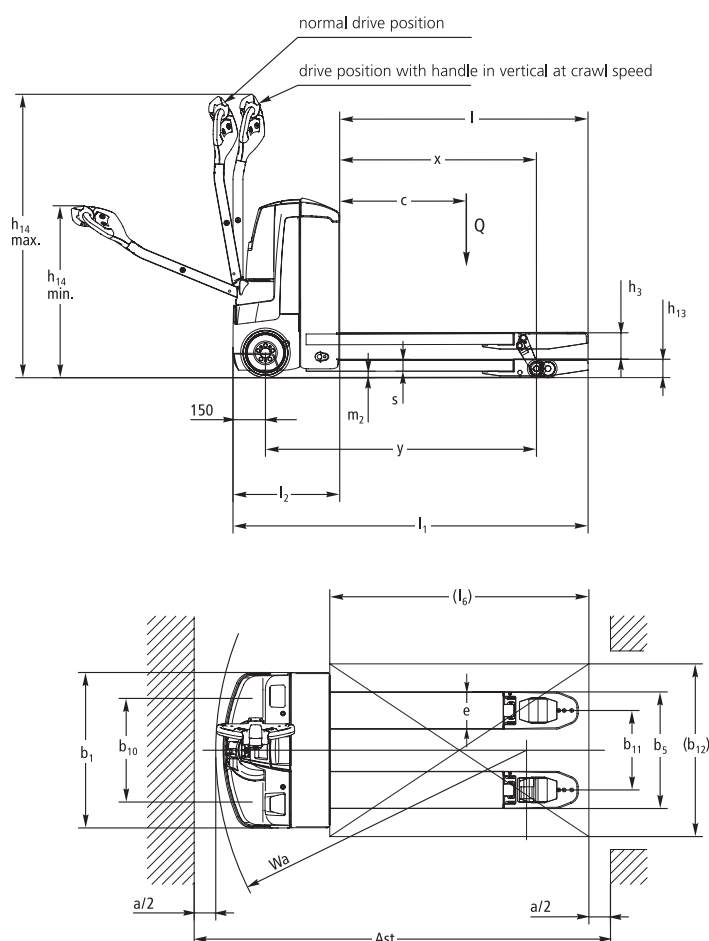


Technical Data (According To VDI 2198)

Identification	1.1	Manufacturer (abbreviation)		Jungheinrich	Jungheinrich	1.1
	1.2	Manufacturer's type designation		EJE 116n	EJE 120n	1.2
	1.3	Drive		electric	electric	1.3
	1.4	Operator type		pedestrian	pedestrian	1.4
	1.5	Load capacity/rated load	Q (t)	1.6	2.0	1.5
	1.6	Load centre distance	c (mm)	600	600	1.6
	1.8	Load distance, centre of drive axle to fork	x (mm)	911 ¹⁾	911 ¹⁾	1.8
	1.9	Wheelbase	y (mm)	1255 ¹⁾ 2)	1255 ¹⁾ 2)	1.9
Weights	2.1	Service weight incl. battery (see line 6.5)	kg	439	441	2.1
	2.2	Axle loading, laden front/rear	kg	737/1302	809/1632	2.2
	2.3	Axle loading, unladen front/rear	kg	346/93	347/94	2.3
Wheels, Chassis	3.1	Tyres		PU/PU	PU/PU	3.1
	3.2	Tyre size, front		230x70	230x70	3.2
	3.3	Tyre size, rear		85x110/85x85	85x110/85x85	3.3
	3.4	Additional wheels (dimensions)		100x40	100x40	3.4
	3.5	Wheels, number front/rear (x = driven wheels)		1x+2/2or4	1x+2/2or4	3.5
	3.6	Tread, front	b ₁₀ (mm)	508	508	3.6
	3.7	Tread, rear	b ₁₁ (mm)	368	368	3.7
Basic Dimensions						
	4.4	Lift	h ₃ (mm)	122	122	4.4
	4.9	Tiller height in drive position min./max.	h ₁₄ (mm)	797/1313	797/1313	4.9
	4.15	Height, lowered	h ₁₃ (mm)	85	85	4.15
	4.19	Overall length	l ₁ (mm)	1644 ²⁾	1644 ²⁾	4.19
	4.20	Length to face of forks	l ₂ (mm)	494 ²⁾	494 ²⁾	4.20
	4.21	Overall width	b ₁ /b ₂ (mm)	720	720	4.21
	4.22	Fork dimensions	s/e/l (mm)	55x172x1150	55x172x1150	4.22
	4.25	Distance between fork-arms	b ₃ (mm)	540	540	4.25
	4.32	Ground clearance, centre of wheelbase	m ₂ (mm)	30	30	4.32
	4.33	Aisle width for pallets 1000x1200 crossways	Ast (mm)	1879 ²⁾	1879 ²⁾	4.33
	4.34	Aisle width for pallets 800x1200 lengthways	Ast (mm)	1929 ²⁾	1929 ²⁾	4.34
	4.35	Turning radius	Wa (mm)	1440 ²⁾	1440 ²⁾	4.35
	5.1	Travel speed, laden/unladen	km/h	6.0/6.0	6.0/6.0	5.1
	5.2	Lift speed, laden/unladen	m/s	0.04/0.05	0.04/0.05	5.2

Performance Data	5.3	Lowering speed, laden/unladen	m/s	0.05/0.04	0.05/0.04	5.3
	5.8	Max. gradient performance, laden/unladen	%	8/20	8/20	5.8
	5.10	Service brake		electric	electric	5.10
Motor	6.1	Drive motor rating S_2 60 min	kW	1.0	1.0	6.1
	6.2	Lift motor rating at S_3 15%	kW	1.2	1.2	6.2
	6.3	Battery acc. to DIN 43531/35/36 A, B, C, no		no/B	no/B	6.3
	6.4	Battery voltage, nominal capacity K_5		24/150	24/150	6.4
	6.5	Battery weight	kg	151	151	6.5
	6.6	Energy consumption acc. to VDI cycle	kWh/h	0.36	0.44	6.6
Others	8.1	Type of drive control		AC-Speed Control	AC-Speed Control	8.1
	8.4	Sound level at driver's ear acc. to DIN 12053	dB(A)	70	70	8.4
1) load section lowered: +53 mm 2) battery compartment M (250 Ah): +71 mm						

This specification sheet according to VDI regulation 2198 only provides technical values for the standard truck. Non-standard tyres, different masts, additional equipment, etc. could produce other values. Right reserved for technical changes and improvements.



Make use of the advantages

Innovative 3-phase AC technology

Jungheinrich motors in 3-phase AC technology are more efficient and at the same time reduce operating costs. Make use of these advantages:

- High efficiency factor with excellent use of energy resources.
- Powerful acceleration.
- Quick direction change without the usual time delay.
- No carbon brushes-the drive motor is maintenance-free.
- 2-year warranty on drive motor.

Long operating times

The energy-saving 3-phase AC technology in combination with battery capacities of up to 250 Ah are the best guarantee for long operating times:

- Short version: 2 PzB 160 Ah.
- Medium version: 2 PzS 250 Ah
- Integrated charger (24V/30A for wet batteries and maintenance-free batteries) for easy charging at any mains socket (optional).



Powerful due to innovative 3-phase AC technology



Combined discharge indicator with state of charge display

Well informed at any time

Extensive monitoring instruments and adjustment options facilitate control at a glance:

- Combined battery discharge indicator (3 colour LCD) with lift cut-off and charge condition display (for integrated charger).
- Information display "CanDis" (optional) with additional operating hour display and fault code data memory.
- Activation of truck via PIN and choice of 3 travel programs via "CanCode" (optional).
- Adjustable travel parameters with CanDis and CanCode (optional).

Optimum cornering

Sprung and cushioned support wheels linked via the torsion bar suspension "Pro-Trac Link"-distribute stabilising forces dependent on travel conditions: evenly over all wheels during straight travel; concentrated on the outer support wheel during cornering.

Make use of the advantages



Ergonomic tiller head

Reduced maintenance

3-phase AC technology in particular ensures significant long-term reduction of operating costs:

- Maintenance-free 3-phase AC drive motor with no carbon brushes.
- Easy access to all aggregates through one-piece front cover held by only two screws.
- Secure protection of controls and plugs from dust and damp through enclosures according to IP 54.
- Low support wheel wear during sloping ramp ascent through level adjustment: through a mechanical connection, both support wheels are constantly at the same height. No catching of or damage to the lower support wheel.

Additional equipment

- Sideways battery removal (SBE) incl. Battery rollers.
- Cold store design.

Jungheinrich Lift Truck Singapore Pte Ltd
(A subsidiary of Jungheinrich Group Germany)
14 Kwong Min Road

Singapore 628715

Tel: +65 6558 7600

Fax: +65 6558 7611

Email: info@jungheinrich.com.sg
Website: www.jungheinrich.com.sg

Jungheinrich
Plants, Sales and
Services Europe
ISO 9001/ISO 14001
质量及环境管理认证



JUNGHEINRICH
Machines. Ideas. Solutions.